

---

## Product Datasheet

### TRAF2 antibody (orb19446)

**Description**

Goat polyclonal antibody to TRAF2

**Species/Host**

Goat

**Reactivity**

Bovine, Canine, Human, Mouse, Rat

**Conjugation**

Unconjugated

**Tested**

ELISA, FC, IF, IHC, WB

**Applications**
**Target**

TRAF2

**Preservatives**

Supplied at 0.5 mg/ml in Tris saline, 0.02% sodium azide, pH 7.3 with 0.5% bovine serum albumin. Aliquot and store at -20°C. Minimize freezing and thawing.

**Storage**

Aliquot and store at -20°C. Minimize freezing and thawing.

**Note**

For research use only

**Application notes**

ELISA: Peptide ELISA: antibody detection limit dilution 1:128000. WB: Approx 50kDa band observed in Human Ovary lysates (calculated MW of 55.9kDa according to NP\_066961.2). In transfected HEK293 transiently expressing Human TRAF2 a band of approx. 60kDa is observed. This band is not observed in the non-transfected HEK293. The endogenous 48kDa protein is observed in both. Recommended concentration: 0.1-0.3 µg/ml.

**Protein Sequence**

KMEAKNSYVRDD

**Clonality**

Polyclonal

**MW**

55.9

**Entrez**
**7186**
**Dilution Range**

ELISA: 1:128000, WB: 0.1-0.5 µg/ml, IHC-P: 3.75 µg/ml

**Expiration Date**

12 months from date of receipt.

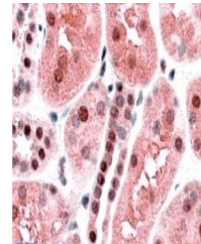


250kDa  
150kDa  
100kDa

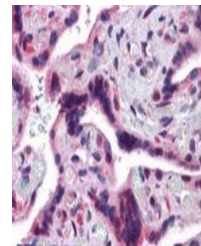


50kDa  
37kDa  
25kDa  
20kDa  
15kDa

Western blot analysis of human ovary lys...



Immunohistochemical staining of Human Ki...



Immunohistochemical staining of Human Pl...