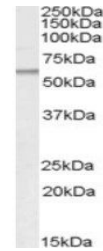


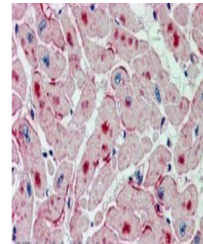
Product Datasheet

PNPLA2 antibody (orb19443)

Description	Goat polyclonal antibody to PNPLA2
Species/Host	Goat
Reactivity	Bovine, Canine, Human, Mouse, Porcine, Rat
Conjugation	Unconjugated
Tested Applications	ELISA, IHC, WB
Target	ATGL / Desnutrin
Preservatives	Supplied at 0.5 mg/ml in Tris saline, 0.02% sodium azide, pH 7.3 with 0.5% bovine serum albumin. Aliquot and store at -20°C. Minimize freezing and thawing.
Storage	Aliquot and store at -20°C. Minimize freezing and thawing.
Note	For research use only
Application notes	ELISA: Peptide ELISA: antibody detection limit dilution 1:32000.IHC: In paraffin embedded Human Heart shows intense staining of distinct spots in the myocardial fibres in transverse section. Recommended concentration, 2-3ug/ml.WB: Approx 60kDa band observed in Human Adipose, Heart and Testis lysates (calculated MW of 55.3kDa according to NP_065109.1). Recommended concentration: 0.5-2 µg/ml.
Protein Sequence	NIIEVSKEARKR
Clonality	Polyclonal
MW	55.3
Entrez	57104
Dilution Range	ELISA: 1:32000, WB: 0.5-2 µg/ml, IHC-P: 2-3 µg/ml
Expiration Date	12 months from date of receipt.



Western blot analysis of Human Adipose I...



Immunohistochemical staining of Human He...