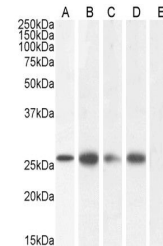


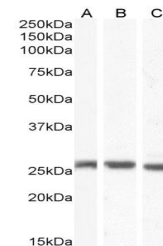
Product Datasheet

GJB2 antibody (orb19424)

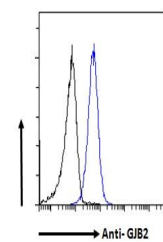
Description	Goat polyclonal antibody to GJB2
Species/Host	Goat
Reactivity	Canine, Human, Mouse, Rat
Conjugation	Unconjugated
Tested Applications	ELISA, FC, WB
Target	GJB2 / Connexin 26
Preservatives	Supplied at 0.5 mg/ml in Tris saline, 0.02% sodium azide, pH 7.3 with 0.5% bovine serum albumin. Aliquot and store at -20°C. Minimize freezing and thawing.
Storage	Aliquot and store at -20°C. Minimize freezing and thawing.
Note	For research use only
Application notes	ELISA: Peptide ELISA: antibody detection limit dilution 1:128000. WB: Approx 26kDa band observed in Mouse Brain lysates (calculated MW of 26.4kDa according to Mouse NP_032151.1 and 26.2kDa according to Human NP_003995.2). Recommended concentration: 0.01-0.03 µg/ml.
Protein Sequence	YLLIRYCSGKSKKP
Clonality	Polyclonal
MW	26.2
Entrez	2706
Dilution Range	ELISA: 1:128000, WB: 0.01-1 µg/ml, IHC-P: 10ug/ml
Expiration Date	12 months from date of receipt.



Western blot analysis of Human Colon (La...



Western blot analysis of Mouse Brain (La...



Flow cytometric analysis of HepG2 cells