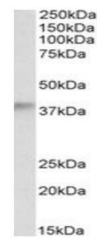


Product Datasheet

ADH5 antibody (orb19399)

Description	Goat polyclonal to ADH5
Species/Host	Goat
Reactivity	Bovine, Canine, Human, Mouse, Porcine, Rat
Conjugation	Unconjugated
Tested Applications	ELISA, IHC, WB
Target	ADH5
Preservatives	Supplied at 0.5 mg/ml in Tris saline, 0.02% sodium azide, pH 7.3 with 0.5% bovine serum albumin. Aliquot and store at -20°C. Minimize freezing and thawing.
Storage	Aliquot and store at -20°C. Minimize freezing and thawing.
Note	For research use only
Application notes	ELISA: Peptide ELISA: antibody detection limit dilution 1:1000.WB: Customer's experiments gave a band at approx 38kDa in Mouse Lymphocyte lysates (calculated MW of 39.7kDa according to Human NP_000662.3 and 39.5kDa according to Mouse NP_031436.2). Recommended concentration: 1-3 µg/ml.
Protein Sequence	KKIKVDEFVTHN
Clonality	Polyclonal
MW	39.7
Entrez	128
Dilution Range	ELISA: 1:4000, WB: 0.5-1.5 µg/ml
Expiration Date	12 months from date of receipt.



Western blot analysis of Human Testis lysate...