
Product Datasheet

FOXP2 antibody (orb19375)

Description

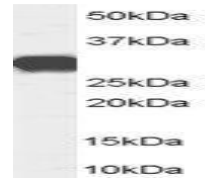
Goat polyclonal antibody to FOXP2


Species/Host

Goat

Reactivity

Bovine, Canine, Feline, Human, Mouse, Porcine, Rat, Zebrafish



Western blot analysis of Human Brain (Ce...

Conjugation

Unconjugated

Tested Applications

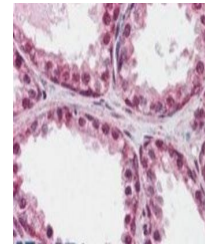
ELISA, IHC

Target

FOXP2 (internal)

Preservatives

Supplied at 0.5 mg/ml in Tris saline, 0.02% sodium azide, pH 7.3 with 0.5% bovine serum albumin. Aliquot and store at -20°C. Minimize freezing and thawing.



Immunohistochemical staining of Human Pr...

Storage

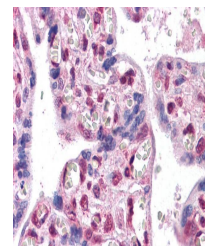
Aliquot and store at -20°C. Minimize freezing and thawing.

Note

For research use only

Application notes

ELISA: Peptide ELISA: antibody detection limit dilution 1:64000. WB: Approx 85kDa band observed in Human Brain (Cerebellum and Frontal Cortex) lysates and in Rat Brain lysates (calculated MW of 82.6kDa according to NP_683696.1). Recommended concentration: 0.3-1 µg/ml. An additional band of unknown identity was also consistently observed at 28-30kDa. This band was successfully blocked by incubation with the immunising peptide. We would appreciate any feedback from people in the field - have any such results been reported with other antibodies/lysates Have any further splice variants/modified forms been reported



Immunohistochemical staining of Human Pl...

Protein Sequence

DEVEYQKRRSQKIT

Clonality

Polyclonal

MW

79.9; 82.6; 48.8; 81.8; 79.8

Entrez
[93986](#)
Dilution Range

ELISA: 1:64000, IHC-P: 2.5 µg/ml

Expiration Date

12 months from date of receipt.