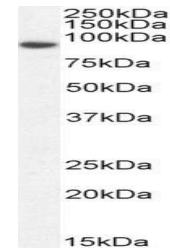


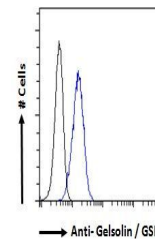
Product Datasheet

GSN antibody (orb19350)

Description	Goat polyclonal antibody to GSN
Species/Host	Goat
Reactivity	Bovine, Canine, Human, Mouse, Rat
Conjugation	Unconjugated
Tested Applications	ELISA, FC, WB
Target	Gelsolin / GSN
Preservatives	Supplied at 0.5 mg/ml in Tris saline, 0.02% sodium azide, pH 7.3 with 0.5% bovine serum albumin. Aliquot and store at -20°C. Minimize freezing and thawing.
Storage	Aliquot and store at -20°C. Minimize freezing and thawing.
Note	For research use only
Application notes	ELISA: Peptide ELISA: antibody detection limit dilution 1:128000. WB: Approx 90kDa band observed in Human Spleen lysates (calculated MW of 85.7kDa according to NP_000168.1). Recommended concentration: 0.1-0.3 µg/ml.
Protein Sequence	PRLKDKKMDAHP
Clonality	Polyclonal
MW	85.7; 80.6; 81.9; 82.5; 81.5; 84.7; 83.3; 56.0
Entrez	2934
Dilution Range	ELISA: 1:128000, WB: 0.1-2 µg/ml, IHC-P: 10ug/ml
Expiration Date	12 months from date of receipt.



Western blot analysis of Human Colorecta...



Flow cytometric analysis of HeLa cells u...