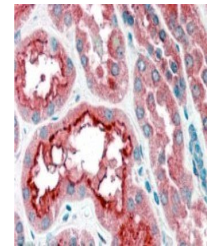


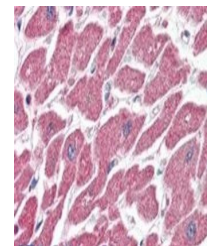
Product Datasheet

CPT1A antibody (orb19346)

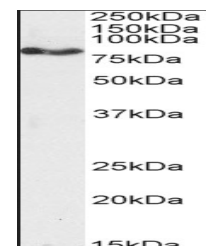
Description	Goat polyclonal antibody to CPT1A
Species/Host	Goat
Reactivity	Human
Conjugation	Unconjugated
Tested Applications	ELISA, IHC, WB
Target	CPT1A
Preservatives	Supplied at 0.5 mg/ml in Tris saline, 0.02% sodium azide, pH 7.3 with 0.5% bovine serum albumin. Aliquot and store at -20°C. Minimize freezing and thawing.
Storage	Aliquot and store at -20°C. Minimize freezing and thawing.
Note	For research use only
Application notes	ELISA: Peptide ELISA: antibody detection limit dilution 1:128000.IHC: In paraffin embedded Human Kidney shows mitochondria staining in PCT. Recommended concentration, 4-6ug/ml.WB: Approx 80kDa band observed in human liver lysates (calculated MW of 86.2kDa according to NP_001027017.1). Recommended concentration: 0.1-0.3 µg/ml.
Protein Sequence	DPAQTVEQRLKLFK
Clonality	Polyclonal
MW	88.4; 86.2
Entrez	1374
Dilution Range	ELISA: 1:128000, WB: 1-3 µg/ml
Expiration Date	12 months from date of receipt.



Immunohistochemical staining of Human Ki...



Immunohistochemical staining of Human He...



Western blot analysis of MCF7 cell lysat...