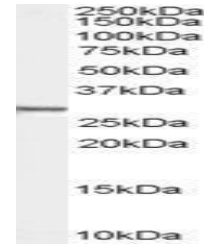


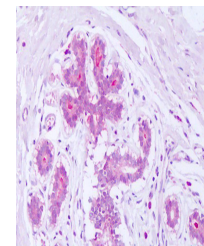
Product Datasheet

SDCBP antibody (orb19342)

Description	Goat polyclonal antibody to SDCBP
Species/Host	Goat
Reactivity	Canine, Human, Mouse, Rat
Conjugation	Unconjugated
Tested Applications	ELISA, IHC, WB
Target	Syntenin / SDCBP
Preservatives	Supplied at 0.5 mg/ml in Tris saline, 0.02% sodium azide, pH 7.3 with 0.5% bovine serum albumin. Aliquot and store at -20°C. Minimize freezing and thawing.
Storage	Aliquot and store at -20°C. Minimize freezing and thawing.
Note	For research use only
Application notes	ELISA: Peptide ELISA: antibody detection limit dilution 1:128000.WB: Approx 28-30kDa band observed in lysates of cell lines HEK293 and A431 (calculated MW of 32.4kDa according to NP_005616.2 and NP_001007068.1 and of 32.3kDa according to NP_001007070.1 and NP_001007071.1). Recommended concentration: 0.01-0.03 µg/ml.
Protein Sequence	SLEDLKVDKVIQAQ
Clonality	Polyclonal
MW	32.4, 32.3
Entrez	6386
Dilution Range	ELISA: 1:128000, WB: 0.01-0.03 µg/ml, IHC-P: 10 µg/ml
Expiration Date	12 months from date of receipt.



Western blot analysis of Human HEK293 ce...



Immunohistochemical staining of Human Br...