

---

## Product Datasheet

### COMT antibody (orb19316)

**Description**

Goat polyclonal antibody to COMT

**Species/Host**

Goat

**Reactivity**

Human

**Conjugation**

Unconjugated

**Tested**

ELISA, IHC, WB

**Applications**
**Target**

COMT (internal)

**Preservatives**

Supplied at 0.5 mg/ml in Tris saline, 0.02% sodium azide, pH 7.3 with 0.5% bovine serum albumin. Aliquot and store at -20°C. Minimize freezing and thawing.

**Storage**

Aliquot and store at -20°C. Minimize freezing and thawing.

**Note**

For research use only

**Application notes**

ELISA: Peptide ELISA: antibody detection limit dilution 1:64000.IE: Sandwich-type ELISA with increasing amount of recombinant COMTcaptured by a rabbit antibody. Recommended reporter concentration: 0.5-2ug/ml.IHC: In paraffin embedded Human Brain (Cerebellum) shows staining of processes coming from the edge of the granular zone into the molecular layer. Recommended concentration, 2-4µg/ml.WB: Approx 28kDa band and faint 25kDa band observed in human testis lysates (calculated MW of 30.0kDa according to NP\_000745.1 and 24.5kDa according to NP\_009294.1). Recommended concentration: 0.03-0.1 µg/ml.

**Protein Sequence**

QDIIPQLKKKYDVD

**Clonality**

Polyclonal

**MW**

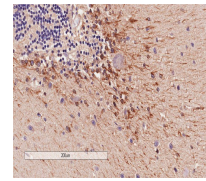
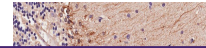
30.0; 24.5

**Entrez**
[1312](#)
**Dilution Range**

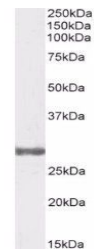
ELISA: 1:64000, WB: 0.03-0.1 µg/ml, IHC-P: 3.75 µg/ml

**Expiration Date**

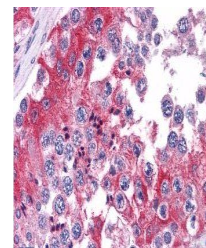
12 months from date of receipt.



Immunohistochemical staining of human Ce...



Western blot analysis of Human Testis ly...



Immunohistochemical staining of Human Te...