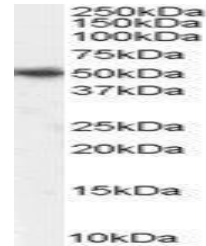


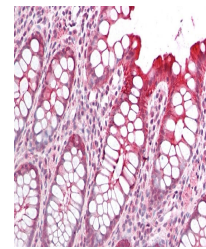
## Product Datasheet

### PICK1 antibody (orb19308)

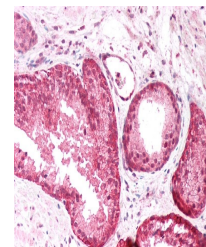
<b>Description</b>	Goat polyclonal antibody to PICK1
<b>Species/Host</b>	Goat
<b>Reactivity</b>	Bovine, Canine, Human, Mouse, Porcine, Rat
<b>Conjugation</b>	Unconjugated
<b>Tested Applications</b>	ELISA, IHC, WB
<b>Target</b>	PICK1
<b>Preservatives</b>	Supplied at 0.5 mg/ml in Tris saline, 0.02% sodium azide, pH 7.3 with 0.5% bovine serum albumin. Aliquot and store at -20°C. Minimize freezing and thawing.
<b>Storage</b>	Aliquot and store at -20°C. Minimize freezing and thawing.
<b>Note</b>	For research use only
<b>Application notes</b>	ELISA: Peptide ELISA: antibody detection limit dilution 1:16000.WB: Approx 50kDa band observed in mouse and rat brain lysates (calculated MW of 46.6kDa according to NP_036539.1, NP_001034672.1and NP_001034673.1). Recommended concentration: 1-3 µg/ml.
<b>Protein Sequence</b>	HYNKLQADPKQ
<b>Clonality</b>	Polyclonal
<b>MW</b>	46.6
<b>Entrez</b>	<b>9463</b>
<b>Dilution Range</b>	ELISA: 1:16000, WB: 1-3 µg/ml, IHC-P: 5 µg/ml
<b>Expiration Date</b>	12 months from date of receipt.



orb19308 (1ug/ml) staining of mouse brai...



Immunohistochemical staining of Human Co...



Immunohistochemical staining of Human Pr...