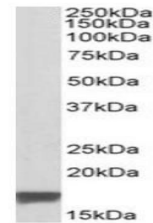


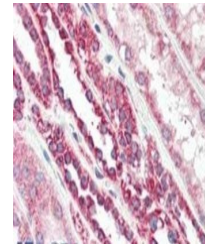
Product Datasheet

TSPO antibody (orb19299)

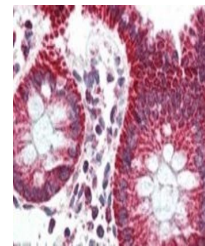
Description	Goat polyclonal antibody to TSPO
Species/Host	Goat
Reactivity	Human
Conjugation	Unconjugated
Tested Applications	ELISA, FC, IF, IHC, WB
Target	TSPO / PBR (isoform)
Preservatives	Supplied at 0.5 mg/ml in Tris saline, 0.02% sodium azide, pH 7.3 with 0.5% bovine serum albumin. Aliquot and store at -20°C. Minimize freezing and thawing.
Storage	Aliquot and store at -20°C. Minimize freezing and thawing.
Note	For research use only
Application notes	ELISA: Peptide ELISA: antibody detection limit dilution 1:128000.IHC: In paraffin embedded Human Colon shows strong cytoplasm staining of absorptive cells. Recommended concentration, 2-4ug/ml.WB: Approx 17kDa band observed in Human Breast cancer lysates (calculated MW of 18.8kDa according to NP_000705.2). Recommended concentration: 0.1-0.3 µg/ml.
Protein Sequence	RDNHGWRGGRRRLPE
Clonality	Polyclonal
MW	18.8
Entrez	706
Dilution Range	ELISA: 1:128000, WB: 0.1-0.3 µg/ml, IHC-P: 5 µg/ml
Expiration Date	12 months from date of receipt.



Western blot analysis of Human Breast Ca...



Immunohistochemical staining of Human Ki...



Immunohistochemical staining of Human Co...