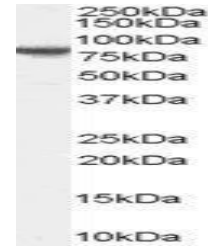


## Product Datasheet

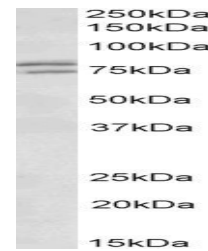
### FXR1 antibody (orb19295)

<b>Description</b>	Goat polyclonal antibody to FXR1
<b>Species/Host</b>	Goat
<b>Reactivity</b>	Bovine, Canine, Human, Mouse, Rat
<b>Conjugation</b>	Unconjugated
<b>Tested Applications</b>	ELISA, FC, IF, WB
<b>Target</b>	FXR1
<b>Preservatives</b>	Supplied at 0.5 mg/ml in Tris saline, 0.02% sodium azide, pH 7.3 with 0.5% bovine serum albumin. Aliquot and store at -20°C. Minimize freezing and thawing.
<b>Storage</b>	Aliquot and store at -20°C. Minimize freezing and thawing.
<b>Note</b>	For research use only
<b>Application notes</b>	ELISA: Peptide ELISA: antibody detection limit dilution 1:128000. WB: Approx 80kDa band observed in lysates of cell line NIH/3T3 (calculated MW of 59.9kDa according to NP_001013457.1). The observed molecular weight corresponds to earlier findings in literature with different antibodies (Khandjian et al Hum Mol Genet. 1998 Dec;7(13):2121-8.; PMID: 9817930). Recommended concentration: 0.1-0.3 µg/ml.
<b>Protein Sequence</b>	RIEGDNENKLPRED
<b>Clonality</b>	Polyclonal
<b>MW</b>	69.7; 60.8; 59.9
<b>Entrez</b>	<b>8087</b>
<b>Dilution Range</b>	ELISA: 1:128000, WB: 1-3 µg/ml, IHC-P: 10ug/ml
<b>Expiration Date</b>	12 months from date of receipt.

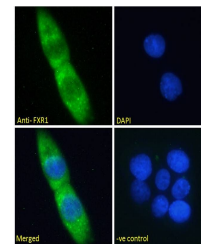


orb19295 (0.2ug/ml) staining of NIH/3T3

...



WB analysis of NIH-3T3 cell lysate using...



Immunofluorescence analysis of A431 cell...