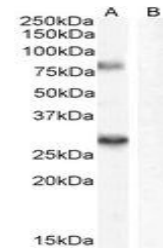


Product Datasheet

SV2A antibody (orb19294)

Description	Goat polyclonal antibody to SV2A
Species/Host	Goat
Reactivity	Bovine, Canine, Human, Mouse, Porcine, Rat
Conjugation	Unconjugated
Tested Applications	ELISA, IF
Target	SV2A
Preservatives	Supplied at 0.5 mg/ml in Tris saline, 0.02% sodium azide, pH 7.3 with 0.5% bovine serum albumin. Aliquot and store at -20°C. Minimize freezing and thawing.
Storage	Aliquot and store at -20°C. Minimize freezing and thawing.
Note	For research use only
Application notes	ELISA: Peptide ELISA: antibody detection limit dilution 1:64000.WB: Approx 80kDa band observed in rat brain lysates (calculated MW of 82.6kDa according to NP_476558.1 (rat)). Recommended concentration: 0.3-1 µg/ml. An additional band of unknown identity was also consistently observed at 28kDa. This band was successfully blocked by incubation with the immunising peptide. We would appreciate any feedback from people in the field - have any results been reported with other antibodies/lysates Have any further splice variants/modified forms been reported
Protein Sequence	TVELYPSDKRTTA
Clonality	Polyclonal
MW	82.7; 20.6
Entrez	9900
Dilution Range	ELISA: 1:64000, WB: 0.3-1 µg/ml, IHC-P: 10 µg/ml
Expiration Date	12 months from date of receipt.



Western blot analysis of Rat Brain (A) +...