

---

## Product Datasheet

### RCAS1 antibody (orb19280)

**Description**

Goat polyclonal antibody to RCAS1

**Species/Host**

Goat

**Reactivity**

Canine, Human, Mouse, Rat

**Conjugation**

Unconjugated

**Tested**

ELISA, IHC, WB

**Applications**
**Target**

EBAG9 / RCAS1

**Preservatives**

Supplied at 0.5 mg/ml in Tris saline, 0.02% sodium azide, pH 7.3 with 0.5% bovine serum albumin. Aliquot and store at -20°C. Minimize freezing and thawing.

**Storage**

Aliquot and store at -20°C. Minimize freezing and thawing.

**Note**

For research use only

**Application notes**

ELISA: Peptide ELISA: antibody detection limit dilution 1:64000. WB: Approx 26kDa band observed in lysates of cell lines HEK293 and A431 (calculated MW of 24.4kDa according to NP\_004206.1 and NP\_004206.1). Recommended concentration: 1-3 µg/ml. A minor band of unknown identity was also consistently observed at 75kDa. This band was successfully blocked by incubation with the immunising peptide. We would appreciate any feedback from people in the field - have any results been reported with other antibodies/lysates Have any further splice variants/modified forms been reported

**Protein Sequence**

KEAQLMKKEQN

**Clonality**

Polyclonal

**MW**

24.4

**Entrez**
**9166**
**Dilution Range**

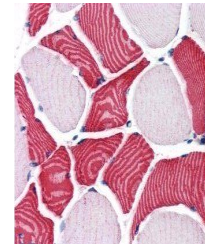
ELISA: 1:64000, WB: 1-3 µg/ml, IHC-P: 3.75 µg/ml

**Expiration Date**

12 months from date of receipt.



Western blot analysis of A431 lysate using...



Immunohistochemical staining of Human Sk...