
Product Datasheet

HSP90B1 antibody (orb19279)

Description

Goat polyclonal antibody to HSP90B1


Species/Host

Goat

Reactivity

Bovine, Canine, Human, Mouse, Porcine, Rat, Zebrafish

Conjugation

Unconjugated

Tested Applications

ELISA, FC, IF, IHC, WB

Target

GPR94 / TRA1

Preservatives

Supplied at 0.5 mg/ml in Tris saline, 0.02% sodium azide, pH 7.3 with 0.5% bovine serum albumin. Aliquot and store at -20°C. Minimize freezing and thawing.

Storage

Aliquot and store at -20°C. Minimize freezing and thawing.

Note

For research use only

Application notes

ELISA: Peptide ELISA: antibody detection limit dilution 1:32000. IHC: In paraffin embedded Human Liver shows staining in some hepatocyte nuclei and weak cytoplasm staining of hepatocytes. Recommended concentration, 3-5ug/ml. WB: Approx 100kDa band observed in lysates of cell line NIH/3T3 (calculated MW of 92.5kDa according to NP_003290.1). Recommended concentration: 0.01-0.03 µg/ml.

Protein Sequence

KEGVKFDESEKTKE

Clonality

Polyclonal

MW

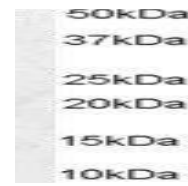
92.5

Entrez
7184
Dilution Range

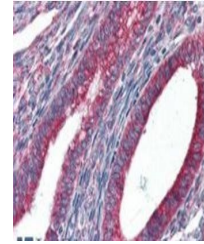
ELISA: 1:32000, WB: 0.1-0.3 µg/ml, IHC-P: 3-5 µg/ml

Expiration Date

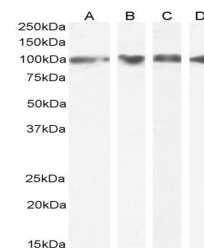
12 months from date of receipt.



Western blot analysis of NIH3T3 cell lys...



Immunohistochemical staining of Human Ut...



Western blot analysis of U2OS (lane 1), ...