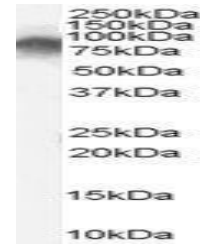


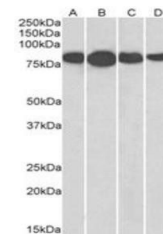
Product Datasheet

RDX antibody (orb19264)

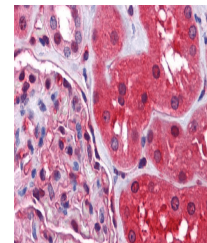
Description	Goat polyclonal antibody to RDX
Species/Host	Goat
Reactivity	Canine, Human, Mouse, Rat
Conjugation	Unconjugated
Tested Applications	ELISA, IHC, WB
Target	Radixin
Preservatives	Supplied at 0.5 mg/ml in Tris saline, 0.02% sodium azide, pH 7.3 with 0.5% bovine serum albumin. Aliquot and store at -20°C. Minimize freezing and thawing.
Storage	Aliquot and store at -20°C. Minimize freezing and thawing.
Note	For research use only
Application notes	ELISA: Peptide ELISA: antibody detection limit dilution 1:4000.WB: Approx 80kDa band observed in Human Lymph Node, Tonsil and Spleen lysates (calculated MW of 68.6kDa according to NP_002897.1). The observed molecular weight corresponds to earlier findings in literature with different antibodies (Magendantz et al, J Biol Chem. 1995 Oct 27;270(43):25324-7.; PMID: 7592691). Recommended concentration: 1-3 µg/ml.
Protein Sequence	QARDETKKTQND
Clonality	Polyclonal
MW	68.6
Entrez	5962
Dilution Range	ELISA: 1:4000, WB: 0.01-0.03 µg/ml, IHC-P: 2.5 µg/ml
Expiration Date	12 months from date of receipt.



Western blot analysis of Human Tonsil ly...



Western blot analysis of NIH3T3 (Lane 1)...



Immunohistochemical staining of Human Ki...