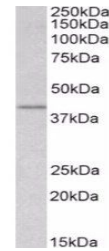


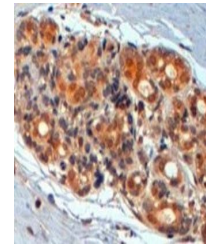
Product Datasheet

WNT3 antibody (orb19254)

Description	Goat polyclonal antibody to WNT3
Species/Host	Goat
Reactivity	Canine, Human, Mouse, Rat
Conjugation	Unconjugated
Tested Applications	ELISA, IHC, WB
Target	WNT3
Preservatives	Supplied at 0.5 mg/ml in Tris saline, 0.02% sodium azide, pH 7.3 with 0.5% bovine serum albumin. Aliquot and store at -20°C. Minimize freezing and thawing.
Storage	Aliquot and store at -20°C. Minimize freezing and thawing.
Note	For research use only
Application notes	ELISA: Peptide ELISA: antibody detection limit dilution 1:2000.IHC: In paraffin embedded Human Breast shows strong fibrous staining in myoepithelial cells. Recommended concentration, 3-5ug/ml.WB: Approx 38kDa band observed in Human Brain lysates (calculated MW of 39.6kDa according to NP_110380.1). Recommended concentration: 1-3 µg/ml.
Protein Sequence	CGRGHNTRTEKRKEK
Clonality	Polyclonal
MW	39.6
Entrez	7473
Dilution Range	ELISA: 1:16000, WB: 1-3 µg/ml, IHC-P: 2-4 µg/ml
Expiration Date	12 months from date of receipt.



Western blot analysis of HEK293 lysate u...



Immunohistochemical staining of Human Br...