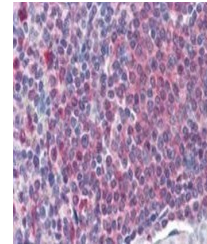


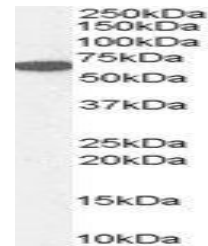
## Product Datasheet

### CAT antibody (orb19252)

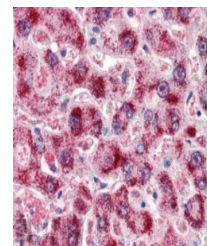
<b>Description</b>	Goat polyclonal antibody to CAT
<b>Species/Host</b>	Goat
<b>Reactivity</b>	Canine, Human, Mouse
<b>Conjugation</b>	Unconjugated
<b>Tested Applications</b>	ELISA, IHC, WB
<b>Target</b>	Catalase / CAT
<b>Preservatives</b>	Supplied at 0.5 mg/ml in Tris saline, 0.02% sodium azide, pH 7.3 with 0.5% bovine serum albumin. Aliquot and store at -20°C. Minimize freezing and thawing.
<b>Storage</b>	Aliquot and store at -20°C. Minimize freezing and thawing.
<b>Note</b>	For research use only
<b>Application notes</b>	ELISA: Peptide ELISA: antibody detection limit dilution 1:32000.IHC: Immunohistochemistry: In paraffin embedded Human Liver shows vesicular staining in the cytoplasm of hepatocytes. Recommended concentration, 2-4ug/ml.WB: Approx 60kDa band observed in Human Kidney and Liver lysates (calculated MW of 59.8kDa according to NP_001743.1). Recommended concentration: 0.3-1 µg/ml.
<b>Protein Sequence</b>	DKYNAEKPKNAIHT
<b>Clonality</b>	Polyclonal
<b>MW</b>	59.8
<b>Entrez</b>	<b>847</b>
<b>Dilution Range</b>	ELISA: 1:8000, WB: 0.1-0.3 µg/ml
<b>Expiration Date</b>	12 months from date of receipt.



Immunohistochemical staining of Human Sp...



Western blot analysis of Human Kidney ly...



Immunohistochemical staining of Human Li...