
Product Datasheet

AMPH antibody (orb19251)

Description

Goat polyclonal antibody to AMPH

Species/Host

Goat

Reactivity

Canine, Human, Mouse, Rat

Conjugation

Unconjugated

Tested

ELISA, IHC, WB

Applications
Target

Amphiphysin / AMPH

Preservatives

Supplied at 0.5 mg/ml in Tris saline, 0.02% sodium azide, pH 7.3 with 0.5% bovine serum albumin. Aliquot and store at -20°C. Minimize freezing and thawing.

Storage

Aliquot and store at -20°C. Minimize freezing and thawing.

Note

For research use only

Application notes

ELISA: Peptide ELISA: antibody detection limit dilution 1:16000. IHC: In paraffin embedded Human Cerebellum shows nuclear and fibrous staining. Recommended concentration, 2-4ug/ml. WB: Approx 125kDa band observed in mouse brain lysates (calculated MW of 76.3kDa according to NP_001626.1). The observed molecular weight corresponds to earlier findings in literature with different antibodies (Wigge et al, Mol Biol Cell. 1997 Oct;8(10):2003-15.; PMID: 9348539). Recommended concentration: 0.1-0.5 µg/ml. A minor band of unknown identity was also consistently observed at 45kDa. This band was successfully blocked by incubation with the immunising peptide. We would appreciate any feedback from people in the field - have any results been reported with other antibodies/lysates Have any further splice variants/modified forms been reported

Protein Sequence

KRKDESRISKAE

Clonality

Polyclonal

MW

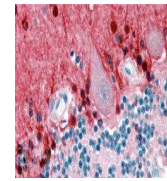
76.3; 71.9

Entrez
[273](#)
Dilution Range

ELISA: 1:16000, WB: 0.1-0.5 µg/ml, IHC-P: 2-4µg/ml

Expiration Date

12 months from date of receipt.


 orb19251
(0.5ug/ml)
staining of
mouse br...

 orb19251
(2.5ug/ml)
staining of
paraffin...