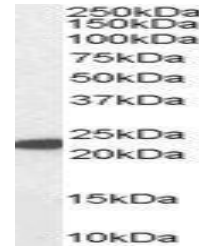


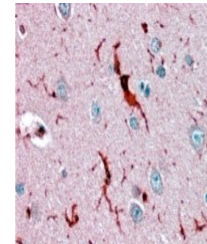
Product Datasheet

GPX1 antibody (orb19249)

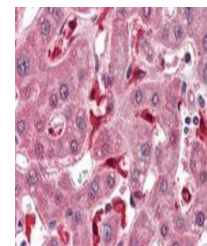
Description	Goat polyclonal antibody to GPX1
Species/Host	Goat
Reactivity	Human
Conjugation	Unconjugated
Tested Applications	ELISA, IHC, WB
Target	Glutathione Peroxidase 1 (isoform1)
Preservatives	Supplied at 0.5 mg/ml in Tris saline, 0.02% sodium azide, pH 7.3 with 0.5% bovine serum albumin. Aliquot and store at -20°C. Minimize freezing and thawing.
Storage	Aliquot and store at -20°C. Minimize freezing and thawing.
Note	For research use only
Application notes	ELISA: Peptide ELISA: antibody detection limit dilution 1:32000.IHC: In paraffin embedded Human Cerebral Cortex shows staining of microglia. Recommended concentration, 3-5ug/ml.WB: Approx 22kDa band observed in Human Liver and Kidney lysates (calculated MW of 22.1kDa according to NP_000572.2). Recommended concentration: 1-3 µg/ml.
Protein Sequence	REALPAPSDDATA
Clonality	Polyclonal
MW	22.1
Entrez	2876
Dilution Range	ELISA: 1:32000, WB: 1-3 µg/ml, IHC-P: 20 µg/ml
Expiration Date	12 months from date of receipt.



Western blot analysis of Human Liver lysates



Immunohistochemical staining of Human Cerebral Cortex



Immunohistochemical staining of Human Liver