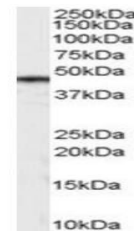


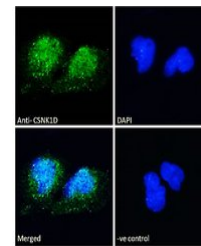
Product Datasheet

CSNK1D antibody (orb19230)

Description	Goat polyclonal antibody to CSNK1D
Species/Host	Goat
Reactivity	Canine, Human, Mouse, Rat
Conjugation	Unconjugated
Tested Applications	ELISA, IF, WB
Target	Casein Kinase 1, delta
Preservatives	Supplied at 0.5 mg/ml in Tris saline, 0.02% sodium azide, pH 7.3 with 0.5% bovine serum albumin. Aliquot and store at -20°C. Minimize freezing and thawing.
Storage	Aliquot and store at -20°C. Minimize freezing and thawing.
Note	For research use only
Application notes	ELISA: Peptide ELISA: antibody detection limit dilution 1:64000.WB: Approx 48kDa band observed in lysates of human brain and of cell line HEK 293 (calculated MW of 47.3kDa according to NP_001884.2). Recommended concentration: 0.3-1 µg/ml.
Protein Sequence	DREERLRHSRNPATR
Clonality	Polyclonal
MW	47.3; 46.1
Entrez	1453
Dilution Range	ELISA: 1:64000, WB: 0.3-1 µg/ml, IHC-P: 10 µg/ml
Expiration Date	12 months from date of receipt.



Western blot analysis of Mouse Brain lysates.



Immunofluorescence analysis of paraformaldehyde-fixed cells.