

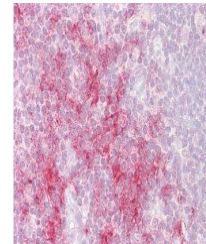
## Product Datasheet

### TRAF1 antibody (orb19193)

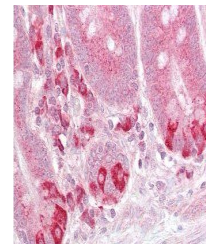
<b>Description</b>	Goat polyclonal antibody to TRAF1
<b>Species/Host</b>	Goat
<b>Reactivity</b>	Human, Mouse
<b>Conjugation</b>	Unconjugated
<b>Tested Applications</b>	ELISA, IHC, WB
<b>Target</b>	TRAF1
<b>Preservatives</b>	Supplied at 0.5 mg/ml in Tris saline, 0.02% sodium azide, pH 7.3 with 0.5% bovine serum albumin. Aliquot and store at -20°C. Minimize freezing and thawing.
<b>Storage</b>	Aliquot and store at -20°C. Minimize freezing and thawing.
<b>Note</b>	For research use only
<b>Application notes</b>	ELISA: Peptide ELISA: antibody detection limit dilution 1:16000.WB: Approx 50-55kDa band observed in lysates of monocytic leukemia cell line U937 (calculated MW of 46.2kDa according to NP_005649.1). The observed molecular weight corresponds to earlier findings in literature with different antibodies (Pryhuber et al , Am J Respir Cell Mol Biol. 2000 Feb;22(2):150-6. PMID: 10657935). Recommended concentration: 0.3-1.0 µg/ml.
<b>Protein Sequence</b>	KLQSPKHAYVKDD
<b>Clonality</b>	Polyclonal
<b>MW</b>	46.2
<b>Entrez</b>	<b>7185</b>
<b>Dilution Range</b>	ELISA: 1:16000, WB: 0.3-1.0 µg/ml, IHC-P: 2.5 µg/ml
<b>Expiration Date</b>	12 months from date of receipt.



Western blot analysis of U937 cell lysat...



Immunohistochemical staining of Human Th...



Immunohistochemical staining of Human Sm...