
Product Datasheet

beta 1 Adrenergic Receptor antibody (orb19192)

Description

Goat polyclonal antibody to beta 1 Adrenergic


Species/Host

Goat

Reactivity

Canine, Human, Mouse, Rat

Conjugation

Unconjugated

Tested Applications

ELISA, IF, IHC

Target

ADRB1

Preservatives

Supplied at 0.5 mg/ml in Tris saline, 0.02% sodium azide, pH 7.3 with 0.5% bovine serum albumin. Aliquot and store at -20°C. Minimize freezing and thawing.

Storage

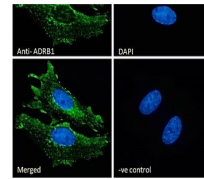
Aliquot and store at -20°C. Minimize freezing and thawing.

Note

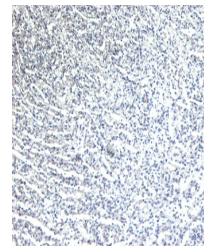
For research use only

Application notes

ELISA: Peptide ELISA: antibody detection limit dilution 1:128000.WB: Approx 55kDa band observed in Human Heart lysates (calculated MW of 51.2kDa according to NP_000675.1). Recommended concentration: 0.3-1 µg/ml.Experiment Notes: This product has been successfully used in assay standardization (beating frequency) of rat cardiomyocytes (PubMed: Walkut G. et al., Am Coll Cardiol. 2010 Feb 2;55(5):463-8.; PMID: 20117461). Recommended concentration: 5ug/ml.



orb19192
Immunofluorescence
analysis of ...



orb19192 Negative
Control showing
staini...



orb19192 (6µg/ml)
staining of paraffin
...

Protein Sequence

ESDEARRCYNDPK

Clonality

Polyclonal

MW

51.2

Entrez
153
Dilution Range

P-ELISA: 1:4000, IHC-P: 4-6µg/ml

Expiration Date

12 months from date of receipt.