
Product Datasheet

CPI17 alpha/PPP1R14A Antibody (orb19175)

Description

CPI17 alpha/PPP1R14A Antibody


Species/Host

Rabbit

Reactivity

Human, Mouse, Rat

Conjugation

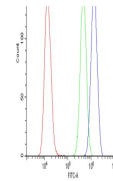
Unconjugated

Tested

FC, ICC, IF, IHC, WB

Applications
Immunogen

E.coli-derived human CPI17 alpha recombinant protein (Position: L30-Q126). Human CPI17 alpha shares 83.5% and 84.5% amino acid (aa) sequence identity with mouse and rat CPI17 alpha, respectively.



Flow Cytometry analysis of U2OS cells us...

Form/Appearance

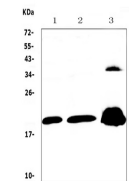
Lyophilized

Concentration

Adding 0.2 ml of distilled water will yield a concentration of 500 µg/ml.

Storage

Store at -20°C for one year from date of receipt. After reconstitution, at 4°C for one month. It can also be aliquotted and stored frozen at -20°C for six months. Avoid repeated freeze-thaw cycles.



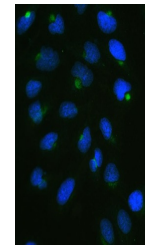
WB analysis of CPI17 alpha using anti-CP...

Note

For research use only

Application notes

Tested Species: In-house tested species with positive results. By Heat: Boiling the paraffin sections in 10mM citrate buffer, pH6.0, for 20mins is required for the staining of formalin/paraffin sections. Other applications have not been tested. Optimal dilutions should be determined by end users. Add 0.2ml of distilled water will yield a concentration of 500ug/ml.



IF analysis of CPI17 alpha using anti-CP...

Isotype

Rabbit IgG

Clonality

Polyclonal

MW

16693 MW

Uniprot ID
[Q96A00](https://www.uniprot.org/entry/Q96A00)
Expiration Date

12 months from date of receipt.