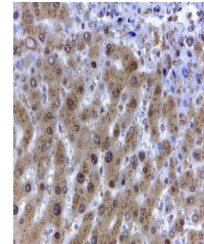


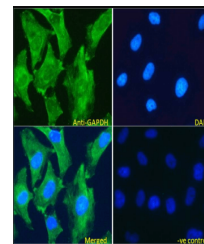
Product Datasheet

GAPDH antibody (orb19168)

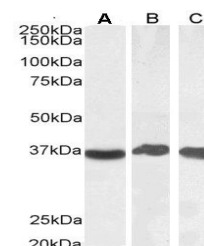
Description	Goat polyclonal antibody to GAPDH
Species/Host	Goat
Reactivity	Canine, Human, Mouse, Rat
Conjugation	Unconjugated
Tested Applications	ELISA, IF, IHC, WB
Target	GAPDH (Internal)
Preservatives	Supplied at 0.5 mg/ml in Tris saline, 0.02% sodium azide, pH 7.3 with 0.5% bovine serum albumin. Aliquot and store at -20°C. Minimize freezing and thawing.
Storage	Aliquot and store at -20°C. Minimize freezing and thawing.
Note	For research use only
Application notes	ELISA: Peptide ELISA: antibody detection limit dilution 1:4000.WB: Approx 36kDa band observed in Human Liver, Testes and Tonsil lysates and in Mouse Spleen lysates (calculated MW of 36.1kDa according to NP_002037.2). Recommended concentration: 0.1-0.3 µg/ml.
Protein Sequence	GVNHEKYDNSLK
Clonality	Polyclonal
MW	36.1
Entrez	2597
Dilution Range	ELISA: 1:16000, WB: 0.03-0.1 µg/ml, IHC-P: 2 µg/ml
Expiration Date	12 months from date of receipt.



Immunohistochemical staining of Human Liver tissue.



Immunofluorescence analysis of HeLa cells.



WB analysis of Human Liver (A), Testes (B), and Tonsil (C).