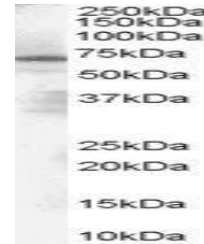


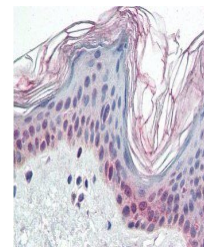
Product Datasheet

PARP2 antibody (orb19158)

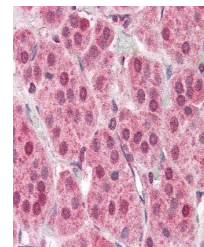
Description	Goat polyclonal antibody to PARP2
Species/Host	Goat
Reactivity	Human
Conjugation	Unconjugated
Tested Applications	ELISA, IHC, WB
Target	PARP2
Preservatives	Supplied at 0.5 mg/ml in Tris saline, 0.02% sodium azide, pH 7.3 with 0.5% bovine serum albumin. Aliquot and store at -20°C. Minimize freezing and thawing.
Storage	Aliquot and store at -20°C. Minimize freezing and thawing.
Note	For research use only
Application notes	ELISA: Peptide ELISA: antibody detection limit dilution 1:8000.WB: Approx 70kDa band observed in Human Spleen lysates (calculated MW of 60.8kDa according to NP_005475.1. Recommended concentration: 1-3 µg/ml.
Protein Sequence	LDLFEVEKDGEKE
Clonality	Polyclonal
MW	60.8
Entrez	10038
Dilution Range	ELISA: 1:8000, WB: 1-3 µg/ml, IHC-P: 5 µg/ml
Expiration Date	12 months from date of receipt.



orb19158 (1µg/ml) staining of Human Sple...



Immunohistochemical staining of Human Sk...



Immunohistochemical staining of Human Ad...