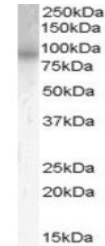


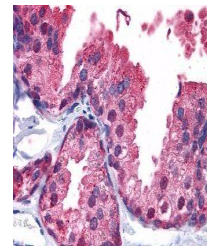
Product Datasheet

PDE4B antibody (orb19154)

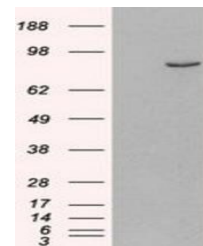
Description	Goat polyclonal antibody to PDE4B
Species/Host	Goat
Reactivity	Human, Mouse, Rat
Conjugation	Unconjugated
Tested Applications	ELISA, IHC, WB
Target	Phosphodiesterase 4B
Preservatives	Supplied at 0.5 mg/ml in Tris saline, 0.02% sodium azide, pH 7.3 with 0.5% bovine serum albumin. Aliquot and store at -20°C. Minimize freezing and thawing.
Storage	Aliquot and store at -20°C. Minimize freezing and thawing.
Note	For research use only
Application notes	ELISA: Peptide ELISA: antibody detection limit dilution 1:8000.WB: Approx 85kDa band observed in Mouse Brain lysates (calculated MW of 83.3kDa according to Human NP_002591.2 and 82.1kDa according to Mouse NP_062814.2). In transfected HEK293 transiently expressing Human PDE4B a band of approx. 85kDa is observed. This band is not observed in the non-transfected HEK293. Recommended concentration: 0.5-1.0 µg/ml.
Protein Sequence	DIDIATEDKSPVDT
Clonality	Polyclonal
MW	83.3; 64.4; 82.1
Entrez	5142
Dilution Range	ELISA: 1:8000, WB: 0.5-1.0 µg/ml, IHC-P: 5 µg/ml
Expiration Date	12 months from date of receipt.



Western blot analysis of Mouse Brain Lys...



Immunohistochemical staining of Human Pr...



Western blot analysis of HEK293 lysate u...