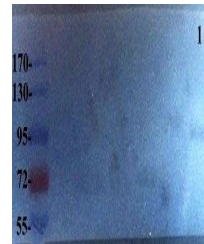


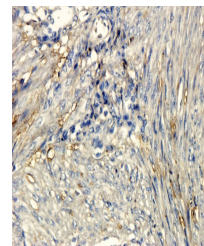
Product Datasheet

EGFRvIII antibody (orb191506)

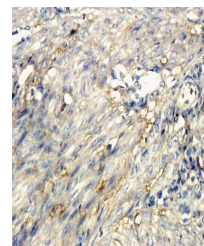
Description	EGFRvIII antibody
Species/Host	Rabbit
Reactivity	Human, Mouse
Conjugation	Unconjugated
Tested Applications	IHC-P, WB
Immunogen	KLH conjugated synthetic peptide derived from human EGFRvIII. Please contact us for the exact immunogen sequence. The peptide is available as orb374827.
Target	EGFRvIII
Form/Appearance	10 mM PBS, 0.02% sodium azide
Concentration	- 100 µg (in 200 µl): 0.5 mg/ml- 200 µg (in 400 µl): 0.5 mg/ml
Storage	Store at 4°C for up to two weeks. For long term storage, aliquot and store at -20°C, avoid freeze/thaw cycles.
Note	For research use only
Isotype	IgG2a
Clonality	Polyclonal
Purity	Polyclonal antibodies are purified by peptide affinity chromatography
Uniprot ID	Q01279, Q504U8
Dilution Range	WB: 2 µg/ml, IHC-P: 1:200
Expiration Date	12 months from date of receipt.



WB analysis of human breast cancer tissue...



Immunohistochemical staining of paraffin...



IHC-P staining of human endometrial cancer...