
Product Datasheet

Prostaglandin E synthase 2 antibody (orb191502)

Description

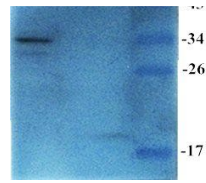
Prostaglandin E synthase 2 antibody


Species/Host

Rabbit

Reactivity

Bovine, Canine, Gallus, Human, Mouse, Porcine, Rat



Western blot analysis of Rat spleen tiss...

Conjugation

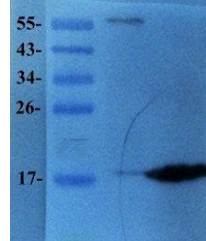
Unconjugated

Tested Applications

ELISA, IHC-P, WB

Immunogen

KLH conjugated synthetic peptide derived from human Prostaglandin E synthase 2. Please contact us for the exact immunogen sequence. The peptide is available as orb374831.



Western blot analysis of Mouse spleen ti...

Target

Prostaglandin E synthase 2

Form/Appearance

10 mM PBS, 0.02% sodium azide

Concentration

- 100 µg (in 200 µl): 0.5 mg/ml- 200 µg (in 400 µl): 0.5 mg/ml

Storage

Store at 4°C for up to two weeks. For long term storage, aliquot and store at -20°C, avoid freeze/thaw cycles.

Note

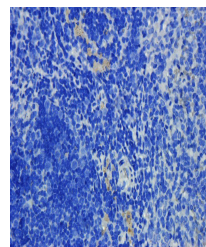
For research use only

Isotype

IgG

Clonality

Polyclonal



Immunohistochemical staining of paraffin...

Purity

Polyclonal antibodies are purified by peptide affinity chromatography

MW

42kDa

Uniprot ID
[Q9H7Z7](https://www.uniprot.org/entry/Q9H7Z7)
NCBI
[001256335](https://www.ncbi.nlm.nih.gov/nuccore/001256335), [001243264](https://www.ncbi.nlm.nih.gov/nuccore/001243264)
Entrez
[80142](https://pubmed.ncbi.nlm.nih.gov/80142/)
Dilution Range

WB: 1:100, IHC-P: 1:200

Expiration Date

12 months from date of receipt.