

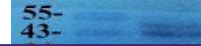
---

## Product Datasheet

### VEGF antibody (orb191500)

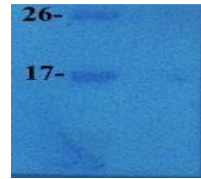
Evolution Biocomponents.

**Description** VEGF antibody



**Species/Host** Rabbit

**Reactivity** Bovine, Canine, Gallus, Guinea pig, Human, Mouse, Porcine, Rat, Sheep

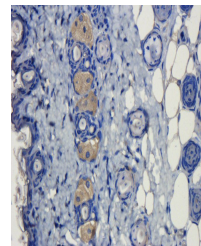


**Conjugation** Unconjugated

**Tested Applications** ELISA, ICC, IF, IHC-P, WB

Western blot analysis of rat brain tissue...

**Immunogen** KLH conjugated synthetic peptide derived from human VEGF. Please contact us for the exact immunogen sequence. The peptide is available as orb374829.



**Target** VEGF

**Form/Appearance** 10 mM PBS, 0.02% sodium azide, 10mg/ml rAlbumin, 25% glycerol

IHC-P image of mouse skin tissue using a...

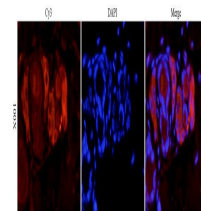
**Concentration** - 100 µg (in 200 µl): 0.5 mg/ml- 200 µg (in 400 µl): 0.5 mg/ml

**Storage** Store at 4°C for up to two weeks. For long term storage, aliquot and store at -20°C, avoid freeze/thaw cycles

**Note** For research use only

**Isotype** IgG

**Clonality** Polyclonal



Immunofluorescence analysis of mouse skin...

**Purity** Polyclonal antibodies are purified by peptide affinity chromatography

**Uniprot ID** [P15692](#), [P16612](#), [Q00731](#)

**NCBI** [001020537](#), [001025366](#)

**Entrez** [7422](#)

**Dilution Range** IF/ICC:1:100, IHC-P: 1:50, WB: 1:200

**Expiration Date** 12 months from date of receipt.