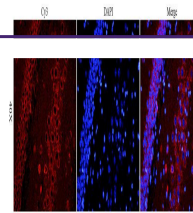

Product Datasheet

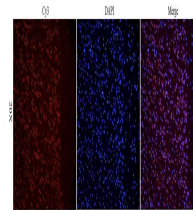
CXCL11 antibody (orb191499)

Evolution Biocomponents.

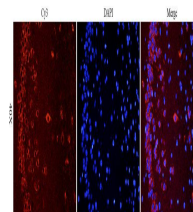
| | |
|----------------------------|--|
| Description | CXCL11 antibody |
| Species/Host | Rabbit |
| Reactivity | Mouse, Porcine, Rat |
| Conjugation | Unconjugated |
| Tested Applications | ELISA, ICC, IF, IHC-P, WB |
| Immunogen | KLH conjugated synthetic peptide derived from human CXCL11. Please contact us for the exact immunogen sequence. The peptide is available as orb393929. |
| Target | CXCL11 |
| Form/Appearance | 10 mM PBS, 0.02% sodium azide |
| Concentration | - 100 µg (in 200 µl): 0.5 mg/ml- 200 µg (in 400 µl): 0.5 mg/ml |
| Storage | Store at 4°C for up to two weeks. For long term storage, aliquot and store at -20°C, avoid freeze/thaw cycles |
| Note | For research use only |
| Isotype | IgG |
| Clonality | Polyclonal |
| Purity | Polyclonal antibodies are purified by peptide affinity chromatography |
| MW | 10 kDa |
| Uniprot ID | Q8R392 , Q7TNL0 |
| NCBI | 005409 , 005400 , 41 , 11 |
| Entrez | 6373 |
| Dilution Range | WB: 2µg/ml, IHC-P:1:200, IF/ICC:1:200 |
| Expiration Date | 12 months from date of receipt. |



IF image of rat brain tissue using anti-...



Immunofluorescence image of rat brain ti...



Immunofluorescence analysis of rat brain...