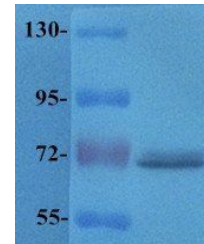


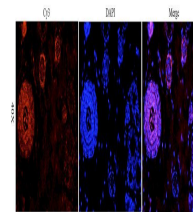
Product Datasheet

TLR2 antibody (orb191498)

Description	TLR2 antibody
Species/Host	Rabbit
Conjugation	Unconjugated
Tested Applications	ELISA, ICC, IF, IHC-P, WB
Immunogen	KLH conjugated synthetic peptide derived from human TLR2. Please contact us for the exact immunogen sequence. The peptide is available as orb374826.
Target	TLR2
Form/Appearance	10 mM PBS, 0.02% sodium azide
Concentration	- 100 µg (in 200 µl): 0.5 mg/ml- 200 µg (in 400 µl): 0.5 mg/ml
Storage	Store at 4°C for up to two weeks. For long term storage, aliquot and store at -20°C, avoid freeze/thaw cycles.
Note	For research use only
Isotype	IgG
Clonality	Polyclonal
Purity	Polyclonal antibodies are purified by peptide affinity chromatography
MW	90 kDa
Uniprot ID	O60603 , E9PTD9 , Q9QUN7
NCBI	21 , 31 , 003264 , 003255
Entrez	7097
Dilution Range	IHC-P: 1:100, WB: 1:500, IF/ICC: 1:100
Expiration Date	12 months from date of receipt.

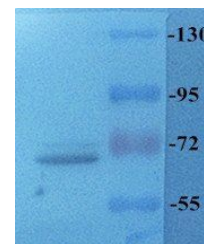


Western blot analysis of rat liver tissue...



Immunofluorescence analysis of rat skin

...



WB analysis of rat liver tissue using another antibody...