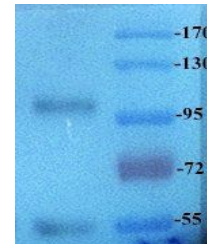


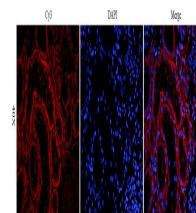
## Product Datasheet

### ROR2 antibody (orb191497)

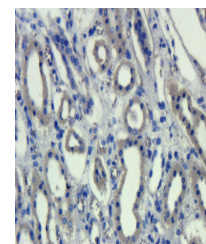
<b>Description</b>	ROR2 antibody
<b>Species/Host</b>	Rabbit
<b>Reactivity</b>	Human, Porcine
<b>Conjugation</b>	Unconjugated
<b>Tested Applications</b>	ELISA, ICC, IF, IHC-P, WB
<b>Immunogen</b>	Recombinant protein
<b>Target</b>	ROR2
<b>Form/Appearance</b>	10 mM PBS, 0.02% sodium azide
<b>Concentration</b>	- 100 µg (in 200 µl): 0.5 mg/ml- 200 µg (in 400 µl): 0.5 mg/ml
<b>Storage</b>	Store at 4°C for up to two weeks. For long term storage, aliquot and store at -20°C, avoid freeze/thaw cycles.
<b>Note</b>	For research use only
<b>Isotype</b>	IgG
<b>Clonality</b>	Polyclonal
<b>Purity</b>	Polyclonal antibodies are purified by peptide affinity chromatography
<b>Uniprot ID</b>	<a href="#">Q01974</a>
<b>NCBI</b>	<a href="#">004551</a> , <a href="#">004560</a>
<b>Entrez</b>	<a href="#">4920</a>
<b>Dilution Range</b>	WB: 1:500, IHC-P: 1:200, IF/ICC: 1:200
<b>Expiration Date</b>	12 months from date of receipt.



Western blot analysis of breast cancer t...



Immunofluorescence analysis of pig kidney...



IHC-P image of pig kidney tissue using R...