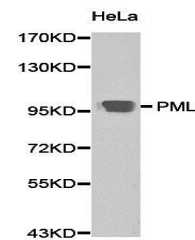


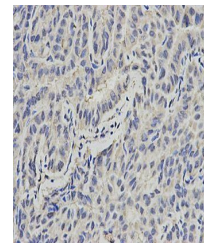
Product Datasheet

PML antibody (orb191472)

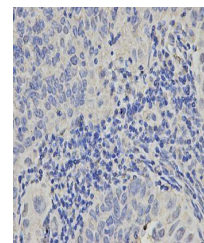
Description	Rabbit polyclonal antibody to PML
Reactivity	Human, Mouse, Rat
Conjugation	Unconjugated
Tested Applications	IHC, WB
Immunogen	Recombinant fusion protein of human PML(NP_150253.2).
Preservatives	PBS with 0.02% sodium azide,50% glycerol,pH7.3.
Concentration	1 mg/ml
Storage	Maintain refrigerated at 2-8°C for up to 2 weeks. For long term storage store at -20°C in small aliquots to prevent freeze-thaw cycles.
Note	For research use only
Isotype	IgG
Clonality	Polyclonal
MW	70-130kDa
Uniprot ID	P29590
Dilution Range	WB: 1:500-1:2000, IHC-P: 1:50-1:200, IF/ICC: 1:20-1:100
Expiration Date	12 months from date of receipt.



Western blot analysis of HeLa cell lysat...



Immunohistochemical analysis of formalin...



Immunohistochemical analysis of formalin...