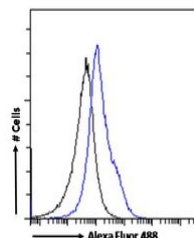


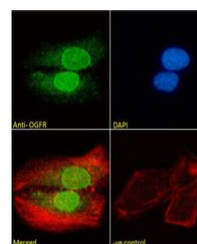
Product Datasheet

Enkephalin antibody (orb19144)

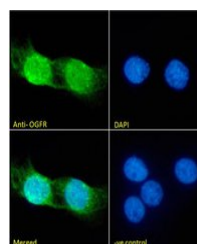
Description	Goat polyclonal antibody to Enkephalin
Species/Host	Goat
Reactivity	Human
Conjugation	Unconjugated
Tested Applications	ELISA, FC, IF, WB
Target	OGFR
Preservatives	Supplied at 0.5 mg/ml in Tris saline, 0.02% sodium azide, pH 7.3 with 0.5% bovine serum albumin. Aliquot and store at -20°C. Minimize freezing and thawing.
Storage	Aliquot and store at -20°C. Minimize freezing and thawing.
Note	For research use only
Application notes	ELISA: Peptide ELISA: antibody detection limit dilution 1:4000.WB: Preliminary experiments in Human Brain, Kidney, Liver and Lung lysates gave no specific signal but low background (at antibody concentration up to 1 µg/ml). We would appreciate any feedback from people in the field - have any results been reported with other antibodies/lysates
Protein Sequence	QDAEVESAKSGK
Clonality	Polyclonal
MW	73.3
Entrez	11054
Dilution Range	ELISA: 1:4000, WB: 1-3 µg/ml, IF/ICC: 10µg/ml, FACS: 10ug/ml
Expiration Date	12 months from date of receipt.



Flow cytometric analysis of paraformaldehyde-fixed cells.



Immunofluorescence analysis of paraformaldehyde-fixed cells.



Immunofluorescence analysis of paraformaldehyde-fixed cells.