
Product Datasheet

PDE4D antibody (orb19141)

Description

Goat polyclonal antibody to PDE4D

Species/Host

Goat

Reactivity

Human

Conjugation

Unconjugated

Tested Applications

EIA, ELISA, IHC, WB

Target

PDE4D

Preservatives

Supplied at 0.5 mg/ml in Tris saline, 0.02% sodium azide, pH 7.3 with 0.5% bovine serum albumin. Aliquot and store at -20°C. Minimize freezing and thawing.

Storage

Aliquot and store at -20°C. Minimize freezing and thawing.

Note

For research use only

Application notes

ELISA: Peptide ELISA: antibody detection limit dilution 1:128000. WB: Approx 70+80+90kDa bands observed in lysates of cell line A549. In transfected COS1 transiently expressing PDE4D1 and PDE4D3 bands of approx. 68kDa and 95kDa are observed. These bands are not observed in the untransfected COS1. In transfected HEK293 transiently expressing PDE4D2 multi bands from approx. 55kDa to 80kDa are observed. These bands are not observed in the non-transfected HEK293. Calculated MW of 91.1kDa according to PDE4D1 (NP_001098101.1), 76.5kDa according to PDE4D2 (NP_006194.2) and 84.7kDa according to PDE4D3 (NP_001159371.1). Recommended concentration: 0.1-0.3 µg/ml.

Protein Sequence

QPEACVIDDRSPDT

Clonality

Polyclonal

MW

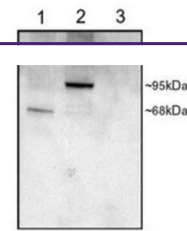
66.5; 57.8; 76.5; 59.1; 84.4; 91.1; 86.7

Entrez
[5144](#)
Dilution Range

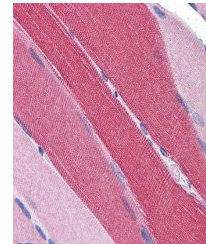
ELISA: 1:128000, WB: 0.1-0.3 µg/ml, IHC-P: 5 µg/ml

Expiration Date

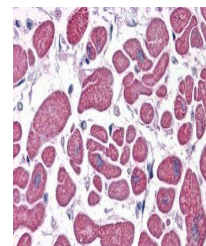
12 months from date of receipt.



Western blot analysis of COS cell lysate...



Immunohistochemical staining of Human Sk...



Immunohistochemical staining of Human He...