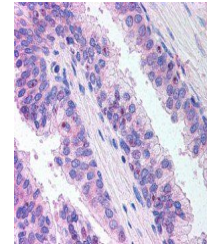


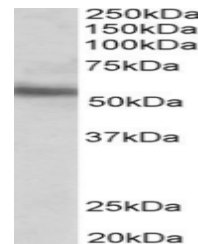
Product Datasheet

ERG antibody (orb19134)

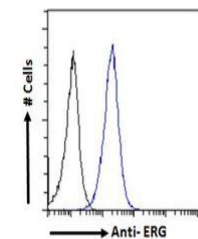
Description	Goat polyclonal antibody to ERG
Species/Host	Goat
Reactivity	Human
Conjugation	Unconjugated
Tested Applications	ELISA, FC, IF, WB
Target	ERG
Preservatives	Supplied at 0.5 mg/ml in Tris saline, 0.02% sodium azide, pH 7.3 with 0.5% bovine serum albumin. Aliquot and store at -20°C. Minimize freezing and thawing.
Storage	Aliquot and store at -20°C. Minimize freezing and thawing.
Note	For research use only
Application notes	ELISA: Peptide ELISA: antibody detection limit dilution 1:16000.IHC: In paraffin embedded Prostate shows nucleolar staining in some of the epithelial cells. Recommended concentration, 10-20ug/ml.WB: Preliminary experiments in lysates of cell lines HEK293, A431 and Jurkat gave no specific signal but low background (at antibody concentration up to 1 µg/ml). We would appreciate any feedback from people in the field - have any results been reported with other antibodies/lysates
Protein Sequence	PNTRLPTSHMPHS
Clonality	Polyclonal
MW	53.8; 52.0; 54.6; 44.0
Entrez	2078
Dilution Range	ELISA: 1:16000, WB: 0.1-0.3 µg/ml, IHC-P: 10ug/ml
Expiration Date	12 months from date of receipt.



Immunohistochemical staining of Human Pr...



Western blot analysis of MOLT4 lysate us...



Flow cytometric analysis of paraformalde...