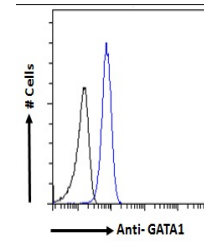


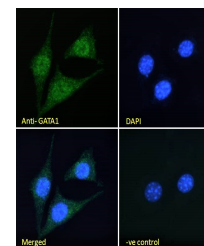
## Product Datasheet

### GATA1 antibody (orb19125)

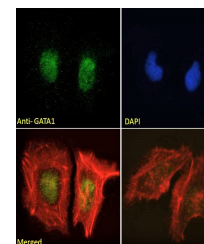
<b>Description</b>	Goat polyclonal antibody to GATA1
<b>Species/Host</b>	Goat
<b>Reactivity</b>	Bovine, Canine, Human, Mouse, Rat
<b>Conjugation</b>	Unconjugated
<b>Tested Applications</b>	ELISA, FC, IF, WB
<b>Target</b>	GATA1
<b>Preservatives</b>	Supplied at 0.5 mg/ml in Tris saline, 0.02% sodium azide, pH 7.3 with 0.5% bovine serum albumin. Aliquot and store at -20°C. Minimize freezing and thawing.
<b>Storage</b>	Aliquot and store at -20°C. Minimize freezing and thawing.
<b>Note</b>	For research use only
<b>Application notes</b>	ELISA: Peptide ELISA: antibody detection limit dilution 1:16000.WB: Approx 48kDa band observed in lysates of human liver, placenta and peripheral blood mononucleocytes (calculated MW of 42.8kDa according to NP_002040.1. Recommended concentration: 0.3-1.0 µg/ml.
<b>Protein Sequence</b>	DAEAYRHSPVFQ
<b>Clonality</b>	Polyclonal
<b>MW</b>	42.8
<b>Entrez</b>	<b>2623</b>
<b>Dilution Range</b>	ELISA: 1:16000, WB: 0.3-1 µg/ml, IHC-P: 10ug/ml
<b>Expiration Date</b>	12 months from date of receipt.



Flow cytometric analysis of paraformalde...



Immunofluorescence analysis of paraforma...



Immunofluorescence analysis of paraforma...