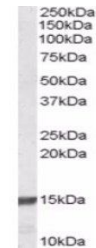


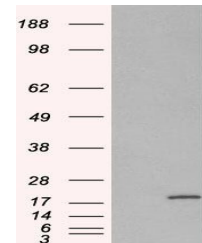
Product Datasheet

RPS19 antibody (orb19118)

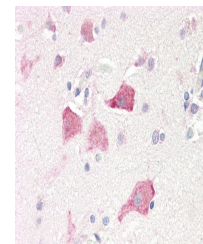
Description	Goat polyclonal antibody to RPS19
Species/Host	Goat
Reactivity	Bovine, Canine, Human, Mouse, Rat
Conjugation	Unconjugated
Tested Applications	ELISA, IHC, WB
Target	RPS19
Preservatives	Supplied at 0.5 mg/ml in Tris saline, 0.02% sodium azide, pH 7.3 with 0.5% bovine serum albumin. Aliquot and store at -20°C. Minimize freezing and thawing.
Storage	Aliquot and store at -20°C. Minimize freezing and thawing.
Note	For research use only
Application notes	ELISA: Peptide ELISA: antibody detection limit dilution 1:64000.WB: Approx 15kDa band observed in Human lysates of cell lines Daudi and K562 (calculated MW of 16.1kDa according to NP_001013.1). In transfected HEK293 transiently expressing RPS19 a band of approx. 18kDa is observed. This band is not observed in the non-transfected HEK293. Recommended concentration: 0.03-0.1 µg/ml.
Protein Sequence	KMVEKDQDGGRK
Clonality	Polyclonal
MW	16.1
Entrez	6223
Dilution Range	ELISA: 1:16000, WB: 0.3-1 µg/ml, IHC-P: 5 µg/ml
Expiration Date	12 months from date of receipt.



orb19118 (0.03ug/ml) staining of K562 ly...



HEK293 overexpressing RPS19 (RC205803) a...



Immunohistochemical staining of Human Co...