
Product Datasheet

NOTCH3 antibody (orb19112)

Description

Goat polyclonal antibody to NOTCH3


Species/Host

Goat

Reactivity

Human, Mouse, Rat

Conjugation

Unconjugated

Tested Applications

ELISA, FC, IHC

Target

NOTCH3

Preservatives

Supplied at 0.5 mg/ml in Tris saline, 0.02% sodium azide, pH 7.3 with 0.5% bovine serum albumin. Aliquot and store at -20°C. Minimize freezing and thawing.

Storage

Aliquot and store at -20°C. Minimize freezing and thawing.

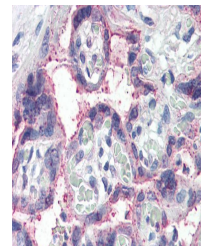
Note

For research use only

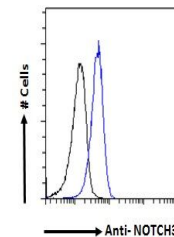
Application notes

ELISA: Peptide ELISA: antibody detection limit dilution 1:16000. WB: Preliminary experiments gave approx 60+70kDa bands in human brain lysates after 1 µg/ml antibody staining. Please note that currently we cannot find an explanation in the literature for the band we observe given the calculated size of 244kDa according to NP_000426.1. The 60+70kDa bands were successfully blocked by incubation with the immunizing peptide. We would appreciate any feedback from people in the field - have any results been reported with other antibodies/lysates Have any further splice variants/modified forms been reported

Immunohistochemical staining of Human Hi...



Immunohistochemical staining of Human Pl...



Flow cytometric analysis of paraformalde...

Protein Sequence

QLGPQPEVTPKRQ

Clonality

Polyclonal

MW

244

Entrez
[4854](#)
Dilution Range

ELISA: 1:16000, IHC-P: 5 µg/ml

Expiration Date

12 months from date of receipt.