

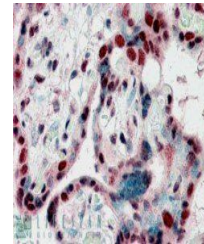
Product Datasheet

CBX3 antibody (orb19108)

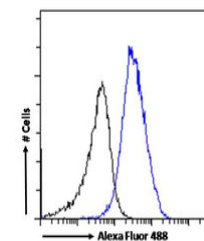
Description	Goat polyclonal antibody to CBX3
Species/Host	Goat
Reactivity	Bovine, Canine, Human, Mouse, Rat
Conjugation	Unconjugated
Tested Applications	ELISA, FC, IF, IHC, WB
Target	CBX3 / HP1 Gamma
Preservatives	Supplied at 0.5 mg/ml in Tris saline, 0.02% sodium azide, pH 7.3 with 0.5% bovine serum albumin. Aliquot and store at -20°C. Minimize freezing and thawing.
Storage	Aliquot and store at -20°C. Minimize freezing and thawing.
Note	For research use only
Application notes	ELISA: Peptide ELISA: antibody detection limit dilution 1:32000.IHC: In paraffin embedded Human Placenta shows strong nuclear staining in trophoblasts. Recommended concentration, 2-3ug/ml.WB: Approx. 20kDa band observed in lysates of A431, HeLa and HepG2. (calculated MW of 20.8kDa according to NP_009207.2 and NP_057671.2). Recommended concentration: 0.3-1.0 µg/ml.
Protein Sequence	EAFLNSQKAGKEKD
Clonality	Polyclonal
MW	20.8
Entrez	11335
Dilution Range	ELISA: 1:32000, WB: 0.3-1.0 µg/ml, IHC-P: 2-3µg/ml, IF/ICC: 10µg/ml, FACS: 10ug/ml
Expiration Date	12 months from date of receipt.



Western blot analysis of NIH3T3 nuclear ...



Immunohistochemical staining of Human PI...



Flow cytometric analysis of paraformalde...