

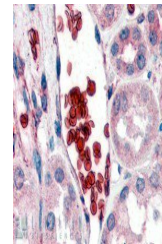
Product Datasheet

GYPA antibody (orb19105)

Description	Goat polyclonal antibody to GYPA
Species/Host	Goat
Reactivity	Human
Conjugation	Unconjugated
Tested Applications	ELISA, WB
Target	Glycophorin A
Preservatives	Supplied at 0.5 mg/ml in Tris saline, 0.02% sodium azide, pH 7.3 with 0.5% bovine serum albumin. Aliquot and store at -20°C. Minimize freezing and thawing.
Storage	Aliquot and store at -20°C. Minimize freezing and thawing.
Note	For research use only
Application notes	ELISA: Peptide ELISA: antibody detection limit dilution 1:4000.IHC: In paraffin embedded Human Kidney shows bright staining of erythrocytes. Recommended concentration, 2-4ug/ml.WB: Approx 18kDa band observed in human liver lysates (calculated MW of 16.4kDa according to NP_002090.2). Recommended concentration: 1-3 µg/ml.
Protein Sequence	SVEIENPETSQ
Clonality	Polyclonal
MW	16.4
Entrez	2993
Dilution Range	ELISA: 1:2000, WB: 1-3 µg/ml
Expiration Date	12 months from date of receipt.



orb19105 (1ug/ml) staining of human live...



orb19105 (2ug/ml) staining of paraffin e...