
Product Datasheet

LDB3 antibody (orb19099)

Description

Goat polyclonal antibody to LDB3

Species/Host

Goat

Reactivity

Canine, Human, Mouse, Porcine, Rat

Conjugation

Unconjugated

Tested Applications

ELISA, IHC, WB

Target

ZASP/ CYPHER / LDB3

Preservatives

Supplied at 0.5 mg/ml in Tris saline, 0.02% sodium azide, pH 7.3 with 0.5% bovine serum albumin. Aliquot and store at -20°C. Minimize freezing and thawing.

Storage

Aliquot and store at -20°C. Minimize freezing and thawing.

Note

For research use only

Application notes

ELISA: Peptide ELISA: antibody detection limit dilution 1:2000. WB: Experiments gave bands at approx 80-90kDa and 30-35kDa in Human Skeletal Muscle lysates after 0.01 µg/ml antibody staining. These bands correspond to earlier findings in literature with different antibodies (Huang et al J Biol Chem. 2003 Feb 28;278(9):7360-5; PMID: 12499364). This protein has a calculated MW of 77.1kDa according to NP_009009.1. Recommended concentration: 0.01-0.03 µg/ml.

Protein Sequence

KSQNKPEDEADE

Clonality

Polyclonal

MW

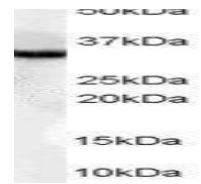
77.1; 66.7; 35.6; 31.0

Entrez
[11155](#)
Dilution Range

ELISA: 1:1000, WB: 0.1-1 µg/ml

Expiration Date

12 months from date of receipt.



Western blot analysis of human muscle ly...



Immunohistochemical staining of Human Sk...