
Product Datasheet

DARC antibody (orb19093)

Description

Goat polyclonal antibody to DARC

Species/Host

Goat

Reactivity

Human

Conjugation

Unconjugated

Tested

ELISA, FC, IHC, WB

Applications
Target

Duffy / FY / DARC

Preservatives

Supplied at 0.5 mg/ml in Tris saline, 0.02% sodium azide, pH 7.3 with 0.5% bovine serum albumin. Aliquot and store at -20°C. Minimize freezing and thawing.

Storage

Aliquot and store at -20°C. Minimize freezing and thawing.

Note

For research use only

Application notes

ELISA: Peptide ELISA: antibody detection limit dilution 1:16000. IHC: In paraffin embedded human kidney, stains epithelial cells of renal tubules and endothelial cells of vessels. The granular staining is compatible with the endoplasmic reticulum association of the protein. This antibody has also been successfully used on HWB: Approx 35kDa band observed in human kidney and human liver lysates (calculated MW of 35.6kDa according to NP_002027.2). Recommended concentration: 0.1-0.3 µg/ml. Experiment Notes: FACS: A customer has reported successful staining of HEK293S-TetR transfected with DARC receptor at a dilution of 1/1000.

Protein Sequence

HRAELSPSTENSSQLDFED

Clonality

Polyclonal

MW

35.7; 35.6

Entrez
[2532](#)
Dilution Range

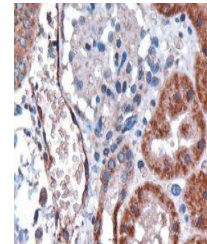
ELISA: 1:16000, WB: 0.3-1 µg/ml, IHC-P: 5 µg/ml

Expiration Date

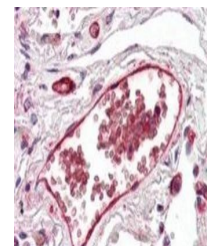
12 months from date of receipt.




Western blot analysis of human liver lys...



Immunohistochemical staining of human ki...



Immunohistochemical staining of Human Lu...