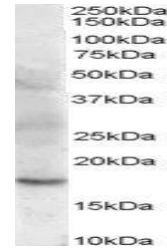


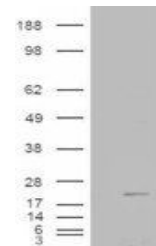
Product Datasheet

CFL2 antibody (orb19077)

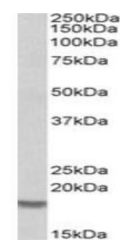
Description	Goat polyclonal antibody to CFL2
Species/Host	Goat
Reactivity	Canine, Human, Mouse, Porcine, Rat
Conjugation	Unconjugated
Tested Applications	ELISA, IHC, WB
Target	Cofilin 2 (muscle)
Preservatives	Supplied at 0.5 mg/ml in Tris saline, 0.02% sodium azide, pH 7.3 with 0.5% bovine serum albumin. Aliquot and store at -20°C. Minimize freezing and thawing.
Storage	Aliquot and store at -20°C. Minimize freezing and thawing.
Note	For research use only
Application notes	ELISA: Peptide ELISA: antibody detection limit dilution 1:128000.WB: Approx 18kDa band observed in human duodenum, heart and skeletal muscle lysates (calculated MW of 18.7kDa according to NP_068733.1and NP_619579.1). Recommended concentration: 0.01-0.03 µg/ml.
Protein Sequence	DIKDRSTLGEK
Clonality	Polyclonal
MW	18.7; 18.7
Entrez	1073
Dilution Range	ELISA: 1:128000, WB: 0.01-0.03 µg/ml, IHC-P: 3.75 µg/ml
Expiration Date	12 months from date of receipt.



Western blot analysis of human muscle ly...



Western blot analysis of HEK293 lysate u...



Western blot analysis of Rat Skeletal Mu...