

## Product Datasheet

### GDF15 antibody (orb19065)

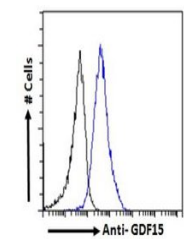
<b>Description</b>	Goat polyclonal antibody to GDF15
<b>Species/Host</b>	Goat
<b>Reactivity</b>	Human
<b>Conjugation</b>	Unconjugated
<b>Tested Applications</b>	ELISA, FC, IHC, WB
<b>Target</b>	GDF15
<b>Preservatives</b>	Supplied at 0.5 mg/ml in Tris saline, 0.02% sodium azide, pH 7.3 with 0.5% bovine serum albumin. Aliquot and store at -20°C. Minimize freezing and thawing.
<b>Storage</b>	Aliquot and store at -20°C. Minimize freezing and thawing.
<b>Note</b>	For research use only
<b>Application notes</b>	ELISA: Peptide ELISA: antibody detection limit dilution 1:2000.WB: Approx 35 kDa band observed in Human Prostate lysates (calculated MW of 34.1kDa according to NP_004855.1). In transfected HEK293 transiently expressing GDF15 a band of approx. 35 kDa is observed. This band is not observed in the non-transfected HEK293. Recommended concentration: 0.1-0.3 µg/ml.
<b>Protein Sequence</b>	QKTD TGVS LQTYDD
<b>Clonality</b>	Polyclonal
<b>MW</b>	34.1
<b>Entrez</b>	<b>9518</b>
<b>Dilution Range</b>	ELISA: 1:2000, WB: 0.1-0.3 µg/ml, IHC-P: 5 µg/ml
<b>Expiration Date</b>	12 months from date of receipt.



Western blot analysis of Human Prostate ...



Western blot analysis of LNCaP (A) and HEK293 (B) ...



Flow cytometric analysis of paraformaldehyde-fixed cells ...