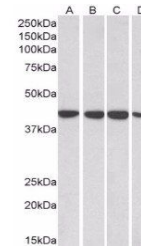


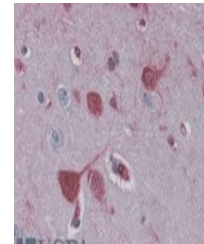
Product Datasheet

RAE1 antibody (orb19060)

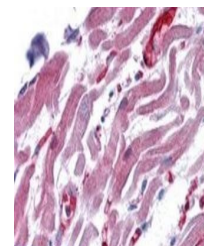
Description	Goat polyclonal to RAE1
Species/Host	Goat
Reactivity	Bovine, Canine, Human, Mouse, Porcine, Rat
Conjugation	Unconjugated
Tested Applications	ELISA, IHC, WB
Target	RAE1
Preservatives	Supplied at 0.5 mg/ml in Tris saline, 0.02% sodium azide, pH 7.3 with 0.5% bovine serum albumin. Aliquot and store at -20°C. Minimize freezing and thawing.
Storage	Aliquot and store at -20°C. Minimize freezing and thawing.
Note	For research use only
Application notes	NP_003601 and NP_001015885 represent identical proteins. ELISA: Peptide ELISA: antibody detection limit dilution 1:64000. WB: Approx 38-40kDa band observed in lysates of human hepatocarcinoma cell line HepG2 (calculated MW of 41.0kDa according to NP_003601.1 and NP_001015885.1). Recommended concentration: 0.03-0.1 µg/ml.
Protein Sequence	NAAEELKPRNKK
Clonality	Polyclonal
MW	41
Entrez	8480
Dilution Range	ELISA: 1:64000, WB: 0.1-0.3 µg/ml, IHC-P: 3.75 µg/ml
Expiration Date	12 months from date of receipt.



Western blot analysis of HepG2 (Lane 1),...



Immunohistochemical staining of Human Co...



Immunohistochemical staining of Human He...