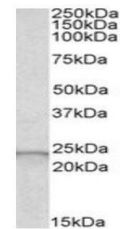


Product Datasheet

GPX2 antibody (orb19054)

Description	Goat polyclonal antibody to GPX2
Species/Host	Goat
Reactivity	Bovine, Canine, Human, Mouse, Porcine, Rat
Conjugation	Unconjugated
Tested Applications	ELISA, WB
Target	Glutathione peroxidase 2 (Int)
Preservatives	Supplied at 0.5 mg/ml in Tris saline, 0.02% sodium azide, pH 7.3 with 0.5% bovine serum albumin. Aliquot and store at -20°C. Minimize freezing and thawing.
Storage	Aliquot and store at -20°C. Minimize freezing and thawing.
Note	For research use only
Application notes	ELISA: Peptide ELISA: antibody detection limit dilution 1:32000.WB: Approx 24kDa band observed in Human Liver lysates (calculated MW of 21.9kDa according to NP_002074.2). Recommended concentration: 0.5-2 µg/ml.
Protein Sequence	SLDGEKVDFN
Clonality	Polyclonal
MW	21.9
Entrez	2877
Dilution Range	ELISA: 1:32000, WB: 0.5-2 µg/ml
Expiration Date	12 months from date of receipt.



Western blot analysis of Human Liver lys...