
Product Datasheet

Caveolin 1 antibody (orb19043)

Description

Goat polyclonal antibody to Caveolin 1

Species/Host

Goat

Reactivity

Canine, Human, Mouse, Porcine, Rat

Conjugation

Unconjugated

Tested

ELISA, FC, IF, IHC, WB

Applications
Target

Caveolin 1

Preservatives

Supplied at 0.5 mg/ml in Tris saline, 0.02% sodium azide, pH 7.3 with 0.5% bovine serum albumin. Aliquot and store at -20°C. Minimize freezing and thawing.

Storage

Aliquot and store at -20°C. Minimize freezing and thawing.

Note

For research use only

Application notes

ELISA: Peptide ELISA: antibody detection limit dilution 1:32000. WB: Approx 21kDa and 25kDa observed in Human Heart, Lung and Spleen lysates. These bands correspond to earlier findings in literature with different antibodies (Wiechen et al Am J Pathol. 2001 Mar;158(3):833-9, PMID: 11238032). In transfected HEK293 transiently expressing Caveolin 1 a band of approx. 23kDa is observed. This band is not observed in the non-transfected HEK293. This protein has a calculated MW of 20.5kDa according to NP_001744.2. Recommended concentration: 0.3-1 µg/ml.

Protein Sequence

DELSEKQVYDAH

Clonality

Polyclonal

MW

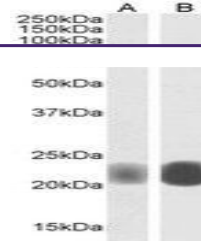
20.5; 17.0

Entrez
857
Dilution Range

ELISA: 1:8000, WB: 0.001-0.01 µg/ml, IHC-P: 2.5µg/ml, FACS: 10ug/ml, IF/ICC: 10µg/ml.

Expiration Date

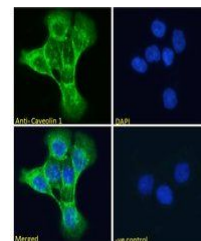
12 months from date of receipt.



WB analysis of A431 (A) and A549 cell ly...



WB analysis of Human Heart using Caveoli...



Immunofluorescence analysis of A431 cell...