

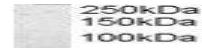
---

## Product Datasheet

### SERPINI2 antibody (orb19038)

**Description**

Goat polyclonal antibody to SERPINI2


**Species/Host**

Goat

**Reactivity**

Canine, Human, Mouse, Rat

**Conjugation**

Unconjugated

**Tested**

ELISA, IHC, WB

**Applications**

Western blot analysis of Human Pancreas ...

**Target**

MEPI / SERPINI2

**Preservatives**

Supplied at 0.5 mg/ml in Tris saline, 0.02% sodium azide, pH 7.3 with 0.5% bovine serum albumin. Aliquot and store at -20°C. Minimize freezing and thawing.

**Storage**

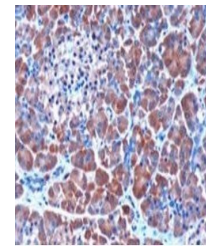
Aliquot and store at -20°C. Minimize freezing and thawing.

**Note**

For research use only

**Application notes**

ELISA: Peptide ELISA: antibody detection limit dilution 1:64000. IHC: In paraffin embedded Human Pancreas, shows cytoplasmic staining of acinar cells and of rare cells in the islets of Langerhans. Recommended concentration, 3µg/ml. WB: Approx 40kDa band observed in Human Pancreas lysates (calculated MW of 46.1kDa according to NP\_006208.1 and 47.4kDa according to NP\_001012303.1). Recommended concentration: 0.3-1 µg/ml.



Immunohistochemical staining of Human Pa...

**Protein Sequence**

KGDWKQKFRKEDTQ

**Clonality**

Polyclonal

**MW**

46.1; 47.4

**Entrez**
**5276**
**Dilution Range**

ELISA: 1:64000, WB: 0.3-1 µg/ml, IHC-P: 3µg/ml

**Expiration Date**

12 months from date of receipt.